

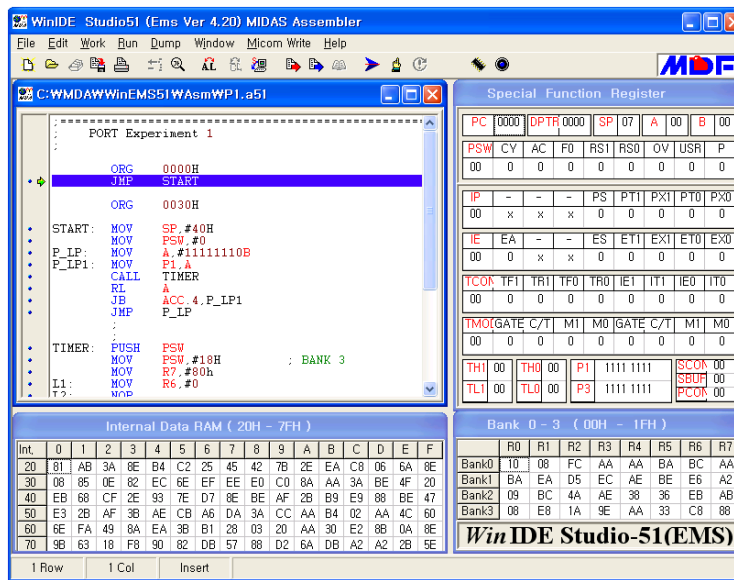
Feature

1. MDA-EMS51 Integration Development Environment Program
 - Source code editing, assembling, compiling and program writing in one powerful environment
 - C-language, Assembling source code debugging function
 - Display the 8051 internal architecture
 - Source level debugging function
 - Code memory disassemble function
 - 8051 register and internal/external memory dump and editing function
 - Pop-up menu display
 - Program stop function
 - Program debugging through breakpoint, and trace
 - 89C51 Write function
2. Various I/O Port Experiment
3. Dot Matrix Experiment
4. D.C Motor experiment by D/A Converter
5. Volt meter experiment by A/D Converter
6. Sound experiment
7. User program start address : 0000H (Reset vector)
8. 89C51 READ/WRITE/VERIFY function
9. Stand alone mode with built-in keyboard and LCD
10. LCD Display (16 x 2 lines)
11. +5V, +12V, -12V S.M.P.S (Free Voltage) Power
12. Aluminum Case


Specification

| | |
|-------------------------------------------------------|----------------------------------------------------------------------------------------------------------------------------------------------------------------------------------------------------------------------------------------------------------------------------------------------------------------------------------------------------------------------------------------------------------------------------------|
| PC Operation Program | MDA-EMS51 Integration Development Environment Program |
| MICRO CONTROLLER | 8031/8051/8751/89C51 Compatible |
| Main RAM | 32KB (62256) |
| Monitor ROM | 32KB (27256) |
| Display Unit | LCD (16 x 2 LINE) |
| I/O Port | CPU I/O PORT, 8255A x 1 |
| SERIAL PORT | RS-232C |
| User program start address | 0000H (RESET Vector) |
| DOT MATRIX LED | 8 x 8 (3COLOR) |
| KEYBOARD | 16 keys for data, 8 keys for function |
| Software | 8051 Assembler, C-Compiler MDA-EMS51 IDE : Emulation Software |
| MDA-EMS51 Integration Development Environment Program | <ul style="list-style-type: none"> • Display 8051 internal architecture • Source code editing, assembling, compiling and program writing • Code memory disassemble • 8051 Register, internal/external memory dump and editing function • Source level debugging function • Pop-up menu • Program stop function by "ESC" key • 89C51 WRITE function |
| A/D, D/A Converter | ADC : ADC0804 |
| | DAC : DAC0800 |
| | MOTOR : D.C MOTOR |
| | Sensor : PHOTO INTERRUPTER |
| SPEAKER | SPEAKER x 1 |
| Step motor interface circuit | Driver T,R x 4 |
| Expansion Connector | System bus 34 pins x 1, CPU I/O PINS 34 x 1, External interface 30 pins x 1 |
| ONE CHIP PROGRAMMER | 89C51 READ/WRITE/VERIFY/ERASER |
| TEXT TOOL | 40 pins x 1 |
| POWER | Input : AC 85~264V Output : DC +5V (3A), +12V (1A), -12V (500mA) |
| Board Size (mm) | 310 x 265 |
| Aluminum Case (mm) | 400(W) x 320(D) x 140(H) ±10(mm) |
| Weight | 4 Kg |
| Accessories | <ol style="list-style-type: none"> 1. MDA-EMS51 IDE & Example CD : 1 Set 2. RS-232C Cable : 1 EA 3. User's Manual : 1 Boos |
| Remark | 1 year warranty |

* Above product can be changed for improving capability without notice.



MDA-EMS51 IDE Program

Experiment List

- LED Display Experiment
- External Interrupt Experiment
- Switch Input Experiment
- DC Motor Control Experiment
- Timer Interrupt Experiment
- ADC Experiment
- DAC Experiment
- Text LCD Display Experiment
- Sound Experiment
- 8X8 DOT Matrix Display Experiment