

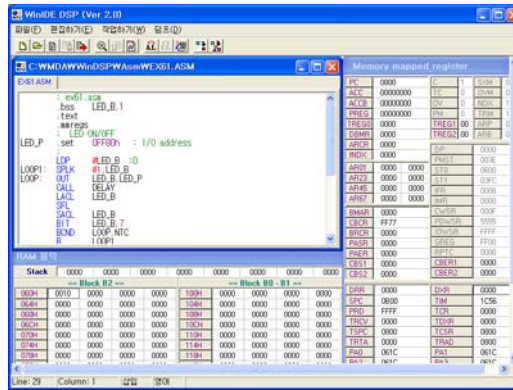
## Feature

1. MDA-DSP Integration Development Environment Program
  - Display the TMS320C50 internal architecture
  - Edit, Assemble, Compile, Download and program run the source file
  - Debugging functions
  - Code memory disassemble function
  - TMS320C50 register Block & external Memory Dump and editing functions
  - Program scroll display function
  - Pop-Up menu display
2. Can be use with stand alone mode with built-in keyboard and LCD
3. Visual indication by LED's for displaying data, status and control pins
4. Various command function
5. I/O port and interrupt experiment
6. I/O output function use to audio or analog signal
7. Analog signal input function use to 16-bit A/D converter
8. Analog signal output function use to 16-bit D/A converter
9. Extension memory and I/O port interface connector
10. +5V, +12V, -12V SMPS (Free Voltage) Power
11. Aluminum Case

## Specification

PC Operation Program	MDA-DSP Integration Development Environment Program
DSP	TMS320C50
Main Memory	64KB (62256 x 2)
Monitor ROM	128KB (27512 x 2)
Display Unit	LCD (16 x 4 LINE) With Back-Light
Serial Port 1	RS-232C (8251A x 1, DB9핀 x 1)
System Clock	40MHz
Software	DSPA Assembler, DSPAC C-Compiler MDA-WinIDE DSP Emulator
Integration development Environment Program	<ul style="list-style-type: none"> <li>• Source code editing, assembling, compiling, and program writing</li> <li>• Code memory disassemble function</li> <li>• Display the TMS320C50 internal architecture</li> <li>• Pop-up Menu display</li> <li>• Program debugging through breakpoint, trace and instructions step facilities</li> </ul>
Memory and I/O Decoder	PAL16L8 or GAL16V8 x 2개
Key Board	16 Keys for Data and 8 Keys for Function
Expansion Connector I	System 40 pins connector x 2 External Interface 20 pins x 1 8255A A,B, C Port 30 pins x 1
Expansion Connector II	14 pins connector for Emulator x 1
Audio Interface (AIC)	TLC32040 ( Included 12 bits A/D and D/A)
Audio Jack	Input x 1, Output x 1, BNC Connector x 2
A/D CONVERTER	ADS7805P(16 bits, 4 channels)
D/A CONVERTER	DAC712P(16 bits, 4 channels)
I/O Output LED	10 $\phi$ x 8
I/O Input and Interrupt Switch	8-pin DIP S/W x 1, TACT S/W x 4
External I/O Interface	8255A x 1
Step Motor Interface	Driver TR x 4
System Bus Indicator	LED(5 $\phi$ ) x 12
POWER	Input : A.C 85~264V Output : D.C +5V (3A), +12V (1A), -12V (500mA)
Board	310 x 265(mm)
Aluminum Case	400 (W) x 320 (D) x 140 (H) $\pm$ 10 (mm)
Weight	4 Kg
Accessories	1. MDA-WinIDE DSP Program CD : 1 Set 2. RS-232C Cable : 1 EA 3. User's Manual : 1 Book
Remark	1 year warranty

\* Above product can be changed for improving capability without notice.



MDA-WinIDE DSP Ver2.0

## Experiment List

- LED Display Experiment
- Switch Input Experiment
- Text LCD Display Experiment
- ADC Experiment
- DAC Experiment
- Audio Experiment
- 8255 Interface Experiment